

SAFE® gel diet energy

Definition

Nutritional and hydration solution for animal.
With 63 % water this gel is used to provide both diet and water source. Formulated with purified ingredients.

Product Purpose

For stressful periods: weak animals, post-operative, transport, breeding...
To be used within the context of experimental protocols.
Can be distributed as a complement to water and diets. It is a diet and water source highly palatable and digestible.



SAFE® gel diet energy

Picture indicative only

Directions for Use

DISTRIBUTION

Period

In accordance with protocol and animal welfare.
Adaptation before use is recommended.

Method

- Ad libitum or rationed according to experimental protocols.
- Place the open cup on the cage floor, or remove the cup and place directly in the cage (feeder, floor, on cup or Petri dish).
- Keep possibly fresh water available. Can be portioned.

DAILY CONSUMPTION

Varies depending on species, weight and age.

STORAGE

Store in a clean, dry and cool place, protected from light.
Store at 4 °C.

SHELF-LIFE from the date of production

12 months in the original packaging.
After opening the cup, the product can be kept 5 days maximum.

Product Presentation

*All SAFE® diets are available with different packaging, irradiation and with analytical data on demand.
Selected solutions of the most sold items from the SAFE® portfolio.

DIET	STANDARD PACKAGING	USUALLY AVAILABLE WITH IRRADIATION DOSE
SAFE® gel diet energy*	60 x 100 g - 30 cups in 2 plastic pouches	Min. 10 kGy

Irradiation

Possible doses: Minimum 10, 25 or 40 kilograys.

Product Form

GEL

SAFE® gel diet energy

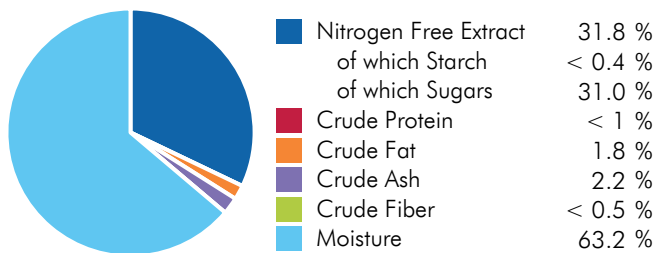
Ingredients

Water, inverted sugar, lard, casein, hydrocolloids, inulin, preservatives.

CENTESIMAL COMPOSITION

Animal Proteins	< 1 %	Water	56.1 %
Forages & Fibers	1.9 %		
Carbon Hydrates	38.7 %		
Oils & Fats	1.8 %		
Others	< 1 %		

NUTRITIONAL COMPOSITION



ENERGY CONTENT

	MJ/kg	kcal/kg	%
ME Pig	6.1	1 457	
ME Atwater	6.2	1 476	
Energy from proteins	0.16	37	2.5
Energy from lipids	0.70	166	11.3
Energy from NFE	5.3	1 272	86.2

More information on energy calculation: www.safe-lab.com

For the welfare of animals SAFE® bedding and environmental enrichment such as SAFE® block gnawing logs and SAFE® nesting materials should be available in the cage.

The values of the end products are given as indication only and have no contractual value. They are calculated averages of product analysis results before irradiation and autoclaving. Depending on production conditions, storage and analytical methods variations may occur. An analysis is performed on request.

Produced in France